

CRUISE LINE CATALOGUE

# ***ULTIMATE CABIN EXPERIENCE***

PROFESSIONAL MINIBARS AND SAFES FOR CRUISE SHIPS

 **DOMETIC** **PROFESSIONAL**





# MINIBARS

Choose from our comprehensive range of minibars. Find the solution to suit the requirements of your guests the style of your interior.

<b>MINIBARS</b>	
HiPro minibars	12 – 13
Drawer minibar	14 – 15
Ventilation guidelines	16 – 17

# SAFES

Enhance the well-being of your guests by giving them the peace of mind that their valuables are safely stored.

<b>SAFES</b>	
Dometic safes intro	18 – 21
Dometic Premium Class	22 – 25
Dometic Standard Class	26 – 29

**DOMETIC ON THE WEB**

Here’s where you can find the complete Dometic range, with detailed information about all products. Plus, interesting facts about our company and download links for all our catalogues.

**DOMETIC.COM/PROFESSIONAL**



# DOMETIC CRUISE LINE SOLUTIONS

## Offer the ultimate cabin experience

Add comfort and convenience to your ship cabins. Dometic offer premium, space-efficient minibars and safes. The minibar ranges include silent, state-of-the art refrigeration technology, beneficial both for the environment and for your costs. For Dometic safes, featuring the latest security technology, choose between wall-hanging or in-drawer-installed safes - all tested to withstand any kind of a day at sea.

### 1. COST REDUCTION

Best-in-class energy efficiency – no matter which cooling technology is used.

### 2. SUSTAINABILITY

Sustainability is part our corporate culture and a major driving force in our research and development. All our minibars meet the most stringent regulatory criteria, this means environmental and health protection for production workers, customers and users.

### ALWAYS AT YOUR SERVICE

We believe in sustainable innovation for a better guest experience.

### 3. GUEST EXPERIENCE

Strong cooling performance, robust build and noiseless operation allows guests to fully enjoy their travels.

### 4. STRONG PARTNERSHIP

After more than 50 years in the industry we have a strong promise to ensure care free maintenance.



# DRIVING SUSTAINABILITY IN OUR INDUSTRY

After recently having been granted the “Most Efficient 2025” EnergyStar certification in the USA, Dometic also scored the “Leader Level” for its minibar products in the MindClick Sustainability Assessment Program (MSAP) of the hospitality sector. These accomplishments stand as a testament to the dedication and hard work of our exceptional team. We are committed to maintaining and even elevating our efforts in driving sustainability in our industry.

More and more hotel guests today expect a sustainable travel experience. Dedicated to a more sustainable lifestyle, they seek to reduce their overall carbon footprint – including that of their travels. When it comes to choosing their holiday accommodation, they are likely to prefer hotels that share their mindset. The MindClick Sustainability Assessment Program (MSAP) helps traveller and hotel brands to make well informed decisions in the jungle of labels and certifications.

The MindClick methodology rates candidates into three levels based on their scores: Starter, Achiever or Leader. Dometic achieved notably high scores in the rating, with emphasis on hotel impact, end-of-use considerations, packaging, and social/environmental aspects of production. That means that Dometic minibars are currently performing at “Leader Level”, which is not only an achievement we are proud of, but also a motivation to keep up our efforts in developing sustainable solutions for the future.



# HIPRO CRUISE LINE MINIBARS

Efficient, silent, and maintenance-free

Dressed in all-black, the Dometic HiPro Cruise Line offers a timeless look that complements any cabin interior. Available in totally silent thermoelectric and highly efficient compressor versions, it’s perfect for an undisturbed night’s sleep and boasts an outstandingly low energy consumption. Thanks to a versatile layout, guests will benefit from access to neatly displayed snacks and beverages. Ensure passenger satisfaction with our efficient, silent, and maintenance-free in-cabin minibars. Specifically designed for the cruise industry, it is no wonder these small-but-mighty refrigerators, with their advanced cooling technology, are so popular with cruise line owners and guests alike.



**Plastic door racks**  
Adjustable transparent door racks.



**Control panel**  
Easy to use control panel with status LED.



**Lock (optional)**  
Secure storage of minibar contents.

HIPRO LINE TECHNICAL DATA			
	F	F	C
MODEL	ALPHA N30S	ALPHA N40S	ALPHA C40S
Cooling technology	Thermoelectric	Thermoelectric	Compressor
Model class (litre)	30	40	40
Storage volume (litre)	26	33	33
Door type	Metal sheet door	Metal sheet door	Metal sheet door
Product dimensions (H×W×D, mm)	520/384/422	550/405/435	550/405/481
Can be built-in/integrated	With ventilation	With ventilation	With ventilation
Sliding hinge kit	Yes	Yes	Yes
Variable door hinge	Yes	Yes	Yes
LED interior light	LED top light	LED top light	LED top light
Input rating (W)	55	55	45
Energy consumption (kWh/24 h)	0.259	0.262	0.130
Noise level (dB[A])	0	0	33
Energy class	F	F	C
Features	<ul style="list-style-type: none"><li>Noiseless</li><li>Low energy consumption</li><li>1 x door rack</li><li>1 x plastic shelf</li><li>Adjustable shelf</li></ul>	<ul style="list-style-type: none"><li>Noiseless</li><li>Low energy consumption</li><li>2 x door rack</li><li>1 x plastic shelf</li><li>Adjustable shelf</li></ul>	<ul style="list-style-type: none"><li>High performance</li><li>Lowest energy consumption</li><li>Integrated silent mode</li><li>2 x door rack</li><li>1 x plastic shelf</li><li>Adjustable shelf</li></ul>
Options	Key lock	Key lock	Key lock



ALPHA N30S



ALPHA N40S



ALPHA C40S





Convenient slide-out access, noiseless operation, low energy consumption: Dometic DM 50 NTE provides 50 litres capacity featuring an automatic slide-out tray for snacks and mini bottles and an adjustable drawer for bottles and cans.

- Unique design for convenient slide-out access
- Thermoelectric cooling unit for low energy consumption
- Noiseless cooling comfort
- Patented and design awarded technology



DM 50 NTE F

	
	
TECHNICAL DATA	
MODEL	DM 50 NTE D/F
Model class (litre)	50
Storage volume (litre)	45
Cabinet colors	Anthracite
Dimensions built-in version (H x W x D, in mm)	DM 50 NTE D: 418 x 550 x 524 DM 50 NTE F: 418 x 550 x 496
Can be built-in/integrated	with ventilation
LED interior light	●
Input rating (W)	75
Energy consumption (kWh/24 h)	0.33
Noise level (dB[A])	0
Features	<ul style="list-style-type: none"><li>• Highly flexible system of dividers and bottle fingers</li><li>• DM 50 D: with a decorative anthracite panel and handle</li><li>• DM 50 F: prepared for a decor panel to match the furniture design of the room</li></ul>
Options	<ul style="list-style-type: none"><li>• Lock</li></ul>



**Pull-out cool**  
Removeable and smooth running sliding rails for convenient use.



**Light the way**  
LED interior light – nicely features the snacks and beverages inside.



**Organized storage**  
Simply slides out and self closing drawer provides easy access to the contents.

# VENTILATION GUIDELINES

## Important note

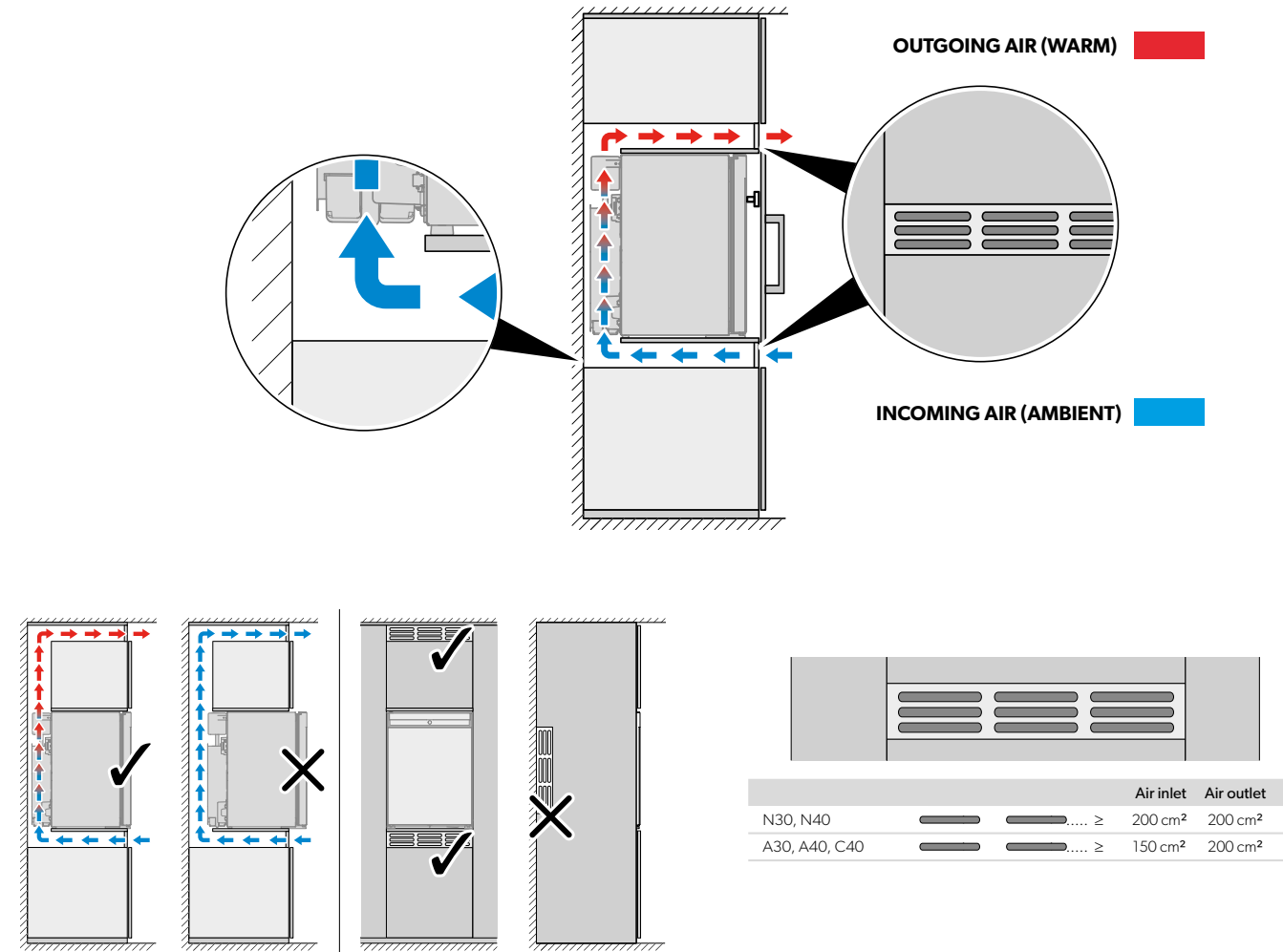
Please read these instructions carefully and follow all instructions, guidelines, and warnings included in all our product manuals in order to ensure that you install, use, and maintain our products properly at all times.

By using our products, you hereby confirm that you have read all instructions, guidelines, and warnings carefully and that you understand and agree to abide by the terms and conditions as set forth herein. You agree to use our products only for the intended purpose and application and in accordance with the instructions, guidelines, and warnings as set forth in the product manuals as well as in accordance with all applicable laws and regulations. A failure to read and follow the instructions and warnings set forth herein may result in an injury to yourself and others, damage to your product or damage to other property in the vicinity. Our product manuals, including the instructions, guidelines, and warnings, and related documentation, may be subject to changes and updates. For up-to-date product information, please visit [dometic.com](https://dometic.com).

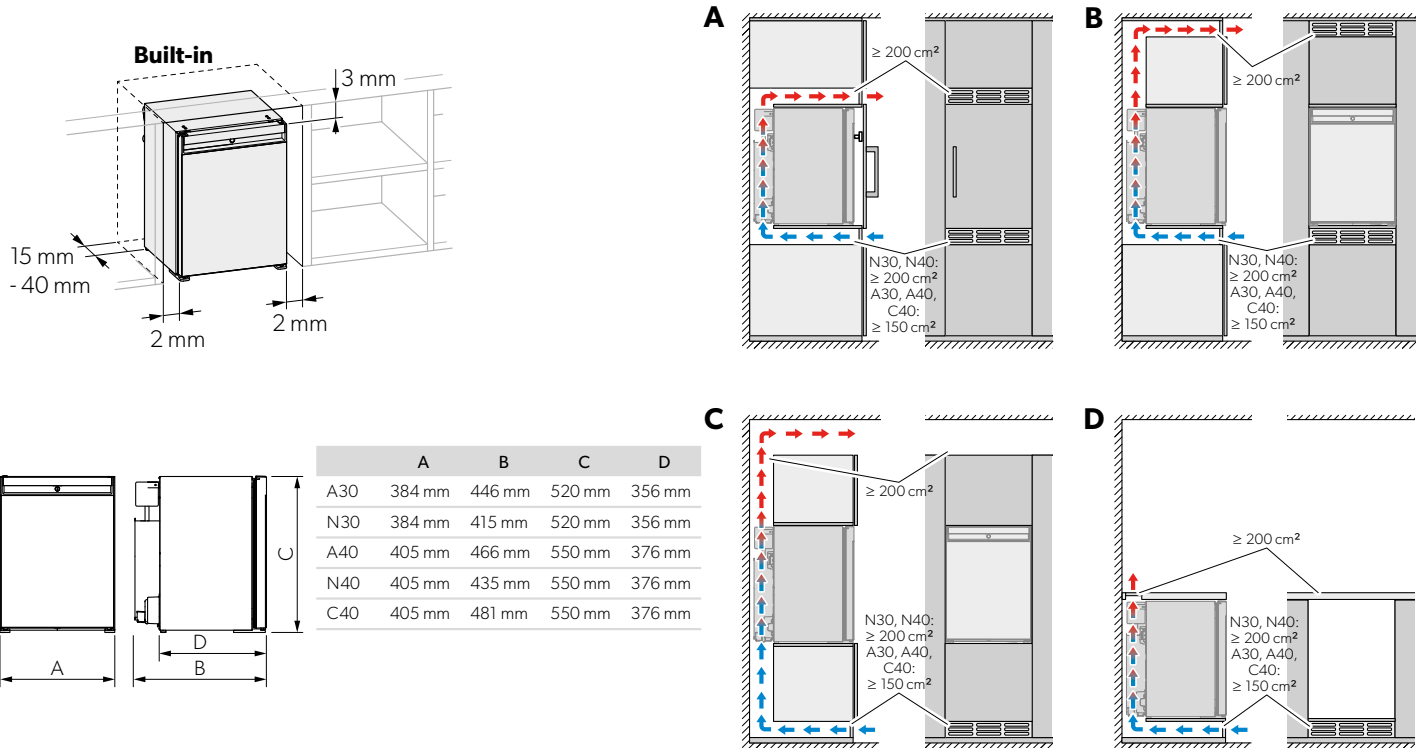
The heat which the cooling unit extracts from the refrigerator interior is emitted at the back of the fridge. If you have a free-standing model, sufficient ventilation is provided in most cases. If you want to integrate the fridge into a piece of furniture, however, the following instructions need to met. Please note that there must be sufficient room for ventilation behind the refrigerator to prevent heat build-up. During installation, make

sure that the refrigerator is standing on a stable, level surface, and not directly near a heat source.

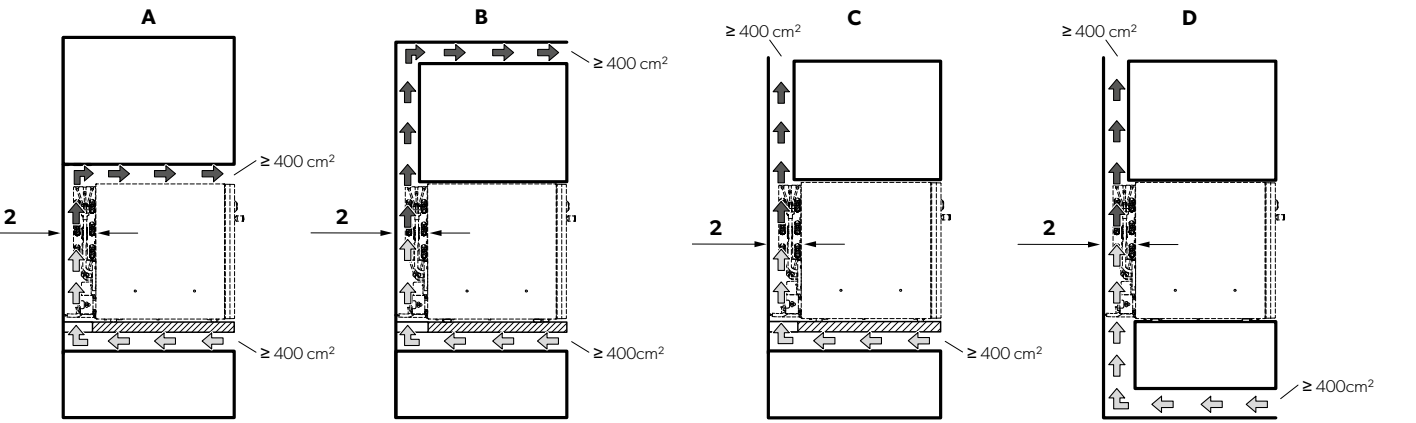
You can find all our documents, manuals and guidelines at [documents.dometic.com](https://documents.dometic.com).



## HIPRO MINIBARS



## DM50 NTE DRAWER MINIBARS



2\* : Minimum 15 mm distance between the minibar's back (incl. the cooling unit) and the surrounding structure)









# FROM STANDARD TO PREMIUM

The range of Dometic proSafe models

Security is an essential requirement for hotel guests, and one of the main reasons for choosing or discarding a destination and a hotel. The Dometic Group aware of this, is always developing and improving all of its products in order to meet the needs of customers.

The latest product innovation Dometic has launched is a proSafe range which goes one step further in terms of design, functionality, technology and security. This proSafe range has a very modern design with a color display, an illuminated keypad, the latest anti-tampering system and a new website platform which offers the possibility to

operate the safe with the strictest security. The elegant cabinets of the new proSafe generation have rounded corners and edges for enhanced safety. Contemporary design.

- Master key
- LED interior light
- iAudit system – unique in the industry
- Remote Emergency Opening System (REOS 2.0) – ultimate security and user comfort
- Battery level check



### Premium Class

Excellence in form and function: Dometic innovations like iAudit tracking and the REOS Remote Emergency Opening System ensure security on all levels.



### Standard Class

High security level combined with easy operation for perfect comfort and convenience.

## PRODUCT FINDER – THE QUICK WAY TO FIND THE RIGHT PRODUCT

### Laser-cut door

Our doors are precisely cut and crafted by a laser beam. This allows us to achieve 100% accuracy in dimensions and an extremely small clearance between the door and casing, making the door impossible to pry open.

### Anti-Tamper system

With the anti-tampering system, Dometic offers a unique security feature for their models. All anti-tampering manipulation attempts are recorded in the electronic of the safe and can be tracked back at any time.

### REOS code

REOS stands for Dometic’s Remote Emergency Opening System. The emergency-opening system from Dometic is based on an innovative encoding system. The unique solution combines advanced electronics with state-of-the-art online technology to allow simple yet highly secure emergency opening by authorised hotel staff.

### Premium iAudit

All operations effected on a safe must be documented – for your own security and for your insurance provider. This is where

Dometic’s Premium iAudit system offers a truly convenient solution: the integrated microchip provides storage capacity for the last 1,000 events.

### SAM

The unique Dometic safe management system (SAM) allows for iAudit Trail and one time emergency code generation (REOS) from a user friendly but PIN secured internet based software tool.

● Yes / – No / ○ Optional

WHAT’S IMPORTANT TO YOU?	PREMIUM CLASS	STANDARD CLASS
Easy operation	●	●
Motorised opening	●	●
LED interior light	●	●
LED display	●	●
Emergency opening with master key	●	●
Emergency opening with master code	●	●
Emergency opening with REOS Code	○	–
Anti-Tamper System	○	–
Premium iAudit	●	–
SAM	○	–
Laser-cut door	●	–
From page	34	38





# DOMETIC PREMIUM CLASS SAFES

Protection for more privacy – comfortably and with absolute reliability. With a Dometic Premium Class proSafe, a hotel room becomes a perfectly private haven for the guest. A safe place for storage, conceived and implemented according to the newest standards. Its innovative and customisable design suits every hotel in a stylish way. Smooth surfaces and rounded edges make it easy to look after and give it long-lasting character. A color display and the integrated soft-touch keypad make operation easy. And a Premium Class proSafe

- LED interior light
- Laser-cut door and frame
- iAudit for convenient documentation
- Emergency opening with key and master code
- Remote Emergency Opening System (REOS 2.0) – ultimate security and user comfort (optional)

also breaks new ground when it comes to protective properties: pioneering technology like the unique iAudit and the anti-tampering system ensure security on all levels. The demand for contemporary security systems with added convenience is supported by special features such as REOS 2.0 software with its emergency code-opening system (optional).



## WIDE CHOICE OF MODELS AND SIZES

Dometic ProSafe MD series Premium Class safes are available in various sizes to suit different capacity demands, interior designs and installation conditions. Sizes range from 8.2 to 29 litres.



**Batteries included**  
Dometic safes come ready to use.



**Plug**  
Optional inside plug to charge mobile devices.



**Automatic opening**  
Safe door opens automatically.



**Fixing kit**  
Optional fixing kit for secure fastening.



TECHNICAL DATA								
	MODEL		MD 283		MD 363		MD 383	
	Type of product		Electronic safe					
	Capacity (litres)		8.2		24		28	
Exterior dimensions (H × W × D, mm)		165 × 280 × 235		190 × 360 × 410		190 × 380 × 450		
Interior dimensions (H × W × D, mm)		162 × 277 × 185		187 × 357 × 360		187 × 377 × 400		
Steel thickness (mm)		Door: 5.0 / Body 1.2		Door: 5.0 / Body 1.5		Door: 5.0 / Body 1.5		
Net weight (kg)		6.1		10.2		11.3		
Keypad		ADA-compliant rubber keypad						
Display		White LED color display, 4-digit guest code, English language						
Locking mechanism		Two 18 mm solid steel bolts						
Locking system		Motorised with automatic opening						
Power		4 LR6/AA 1.5 V batteries (incl.)						
Cabinet color		Anthracite						
FEATURES								
LED interior light		●		●		●		
Laser cut technology		●		●		●		
Masterkey opening*		●		●		●		
Mastercode opening		●		●		●		
Anti-tampering System		○		○		○		
REOS		○		○		○		
iAudit		●		●		●		
Laptop size		–		15"		17"		
OPTIONS								
		• Left-hand hinge • Fixing Kit • Master key		• Left-hand hinge • Two steps emergency code opening (REOS) • Fixing Kit • Master key		• Left-hand hinge • Two steps emergency code opening (REOS) • Fixing Kit • Master key		

\*Master keys are optional, must be ordered separately, and are model-specific.

TECHNICAL DATA								
	MODEL		MD 408		MD 493		MDD 403	
	Type of product		Electronic safe					
	Capacity (litres)		22.5		29		15.7	
Exterior dimensions (H × W × D, mm)		190 × 405 × 350		190 × 490 × 370		200 x 400 x 400		
Interior dimensions (H × W × D, mm)		187 × 402 × 300		187 × 487 × 320		135 x 315 x 370		
Steel thickness (mm)		Door: 5.0 / Body 1.5		Door: 5.0 / Body 1.5		Door: 5.0 / Body 1.5		
Net weight (kg)		10.4		12.4		17.5		
Keypad		ADA-compliant rubber keypad						
Display		White LED color display, 4-digit guest code, English language						
Locking mechanism		Two 18 mm solid steel bolts						
Locking system		Motorised with automatic opening						
Power		4 LR6/AA 1.5 V batteries (incl.)						
Cabinet color		Anthracite						
FEATURES								
LED interior light		●		●		●		
Laser cut technology		●		●		●		
Masterkey opening*		●		●		●		
Mastercode opening		●		●		●		
ANTI-TAMPERING SYSTEM		○		○		○		
REOS		○		○		○		
iAudit		●		●		●		
Laptop size		15"		17"		15"		
OPTIONS								
		<ul style="list-style-type: none"><li>• Left-hand hinge</li><li>• Two steps emergency code opening (REOS)</li><li>• Fixing Kit</li><li>• Master key</li></ul>		<ul style="list-style-type: none"><li>• Left-hand hinge</li><li>• Fixing Kit</li><li>• Master key</li></ul>		<ul style="list-style-type: none"><li>• Two steps emergency code opening (REOS)</li><li>• Fixing Kit</li><li>• Master key</li></ul>		

\*Master keys are optional, must be ordered separately, and are model-specific.

● Yes / – No / ○ Optional

CLIMATE

HYGIENE & SANITATION

POWER & CONTROL

SAFETY & SECURITY



# DOMETIC STANDARD CLASS SAFES

Robustly made with user-friendly features and functions

It puts hotel guests’ mind at rest to have a safe place for their valuables while travelling. Providing a secure space for important or valuable objects yet it is a distinctive feature when choosing a hotel room or suite. With a Standard Class proSafe, you can create a reliable spot in a guest room that is worth every penny. Security and functionality are paramount with all Dometic safe models. The Standard Class safe models offer your guests a high level of security thanks to their robust construction. Their simple and intuitive usability provides perfect comfort and convenience.

- Robust and reliable
- LED display
- LED interior light
- Master key and master code emergency opening
- Wide choice: vertical, horizontal, top-opening

## DOMETIC PROSAFE MDL – VERTICAL OR HORIZONTAL

MDL 408



MDL 193

With quality and security at their core, these value-for-money in-room safes significantly enhance the security of existing hotel rooms.

- Value-for-money solution for upgrading hotel rooms
- Vertical or horizontal model – both with 18.4 litres capacity
- Easy installation inside a cabinet or on the wall
- Emergency opening with master code or master key
- Battery-low warning alerts users to change battery

## DOMETIC PROSAFE MD 310 / 390 / 450 SAFE INVESTMENT

The doors on all the Standard Class safe models are precisely cut and crafted. Their robust construction and a locking system with extra-strong steel bolts leave no point of attack for burglars. The LED interior light minimises the risk of forgotten valuables. Fast and secure emergency opening is possible with a master key or master code (depending on the model).

- Robust, reliable construction for optimal safety
- LED interior light makes the contents visible at a glance
- Emergency opening with master key or master code



## DOMETIC PROSAFE MDT TOP-OPENING SAFE

Part of the Dometic Standard Class range, the Dometic proSafe MDT 400 X top-opening safe provides a simple, yet ingenious solution that is easy to operate and safe to use. The top-opening drawer safe can be integrated in an existing furniture drawer and provides easy access to guests’ valuables. At the same time it meets the highest demands on ergonomic design, comfort and security with an LED inside light for standard, master key and master code opening possibility in case of emergency, digital LED illuminated keypad, four-digit code and top-opening stabilizer arm. An audio signal confirms that the safe is securely locked.

- Convenient access from above
- LED interior light makes the contents visible at a glance
- Enough room to fit laptop and tablet computers
- Ideal for installation into existing hotel room drawer
- Stabilizer arm for smooth opening and closing of the lid



- Easy operation**  
The operation is easy to understand and explained via the pictogram.
- Handle**  
Integrated handle for easy opening and closing.
- Light the way**  
Standard LED interior lighting.
- Soft close**  
Muted door closing.







**BELGIUM, NETHERLANDS  
& LUXEMBOURG**

**Dometic BeNeLuX**

Lourdesstraat 84 B  
B-8940 Geluwe

Tel +32 2 3598040  
+32 (0) 478 6414 68

Mail [hospitality\\_nl@dometic.com](mailto:hospitality_nl@dometic.com)

**DENMARK**

**Dometic Denmark A/S**

Nordensvej 15, Taulov  
DK-7000 Fredericia

Tel +45 75585966

Mail [hospitality\\_ne@dometic.com](mailto:hospitality_ne@dometic.com)

**FINLAND**

**Dometic Finland Oy**

Valimotie 15

FIN-00380 Helsinki

Tel +358 20 7413220

Mail [hospitality\\_ne@dometic.com](mailto:hospitality_ne@dometic.com)

**FRANCE**

**Dometic SAS**

6 Avenue du Poteau  
Batiment B1

60300 Chamant

Tel +33 3 44633521/33

Mail [hospitality\\_fr@dometic.com](mailto:hospitality_fr@dometic.com)

**GERMANY, AUSTRIA  
& SWITZERLAND**

**Dometic GmbH**

In der Steinwiese 16  
D-57074 Siegen

Tel +49 (0) 271 692 134 / 142  
+49 (0) 271 692 127

Mail [hospitality\\_de@dometic.com](mailto:hospitality_de@dometic.com)

**ITALY**

**Dometic Italy S.r.l.**

Via Virgilio, 3

I-47122 Forlì (FC)

Tel +39 0543 754901

Mail [hospitality\\_it@dometic.com](mailto:hospitality_it@dometic.com)

**MIDDLE EAST & AFRICA**

**Dometic Middle East FZCO**

P.O. Box 17860

S-D 6, Jebel Ali Freezone

Dubai

Tel +971 4 883 3858

Mail [hospitality\\_ae@dometic.com](mailto:hospitality_ae@dometic.com)

**NORWAY**

**Dometic Norway AS**

Elveveien 30B

3262 Larvik

Tel +47 33428450

Mail [hospitality\\_ne@dometic.com](mailto:hospitality_ne@dometic.com)

**SWEDEN**

**Dometic Scandinavia AB**

Gustaf Melins gata 7

S-421 31 Västra Frölunda

Tel +46 31 7341100

Mail [hospitality\\_ne@dometic.com](mailto:hospitality_ne@dometic.com)

**SPAIN**

**Dometic Spain, S.L.**

Avda. Sierra del Guadarrama, 16

E-28691 Villanueva de la Cañada

Madrid

Tel +34 91 833 6089

Mail [hospitality\\_es@dometic.com](mailto:hospitality_es@dometic.com)

**PORTUGAL**

**Dometic Spain, S.L.**

Branch Office em Portugal

Rot. de São Gonçalo nº 1– Esc. 12

2775-399 Carcavelos

Tel +351 219 244 173

Mail [hospitality\\_pt@dometic.com](mailto:hospitality_pt@dometic.com)

**UNITED KINGDOM & IRELAND**

**Dometic UK Ltd.**

Dometic House, The Brewery,

Blandford St. Mary's

Dorset DT11 9LS

Tel +44 125 841 4581

Mail [hospitality\\_uk@dometic.com](mailto:hospitality_uk@dometic.com)

**FOR SALES IN POLAND, EASTERN  
EUROPE, TURKEY & ISRAEL, PLEASE  
CONTACT**

**HOSPITALITY\_EE@DOMETIC.COM**

**FOR SALES IN GREECE, PLEASE  
CONTACT**

**HOSPITALITY\_GR@DOMETIC.COM**

We distribute our products in around 100 markets. Please mail us at: [hospitality@dometic.com](mailto:hospitality@dometic.com), or check our website [dometic.com/hospitality](http://dometic.com/hospitality)

**USA & CANADA**

**Dometic Corporation**

Columbia Centre 1

5600 N. River Rd

Suite 250

Rosemont, IL 60018

Tel +1 574 326 7635

Tel +1 574 294 2511

Mail [hospitality\\_us@dometic.com](mailto:hospitality_us@dometic.com)

**MEXICO**

**Dometic MX**

Circuito Médicos No. 6 Local 1

Colonia Ciudad Satélite

CP 53100 Naucalpan de Juárez

Estado de México

Tel +52 55 5374 4108

Mail [hospitality\\_mx@dometic.com](mailto:hospitality_mx@dometic.com)

**EXPORT**

**Dometic Competence Center**

Circuito Médicos No. 6 Local 1

Colonia Ciudad Satélite

CP 53100 Naucalpan de Juárez

Estado de México

Tel +52 55 5374 4108

Mail [hospitality\\_mx@dometic.com](mailto:hospitality_mx@dometic.com)

**AUSTRALIA**

**Dometic Austria**

7 Nursery ave

Clayton South

Victoria 3169

Tel +61 1800 212 121

Mail [hospitality\\_au@dometic.com](mailto:hospitality_au@dometic.com)

**CHINA**

**Dometic Asia Co., Ltd**

Room 803-805A, Waterfront Place Block E,

No.31, Lane 168, Daduhe Road, Putuo

District, Shanghai, China

Tel +86-21-60325088

Mail [hospitality\\_cn@dometic.com](mailto:hospitality_cn@dometic.com)

**JAPAN**

**Dometic KK**

Maekawa-Shibaura, Bldg. 2

2-13-9 Shibaura Minato-ku

Tokyo 108-0023

Tel +81 3 5445 3333

Mail [hospitality\\_jp@dometic.com](mailto:hospitality_jp@dometic.com)